



 Print  Copy  Scan  Fax  Publish

Professional Document Management



KM-3035/4035/5035

KM-3035/4035/5035

Serious Productivity Partners

With workgroup solutions that work overtime, you can take total control of all your critical document tasks.

Kyocera introduces a new generation of networked, **multi-function** devices that are rapidly redefining workgroup productivity and efficiency. Engineered for the serious demands of corporate environments, the KM-3035, KM-4035, and KM-5035 Document Imaging Solutions build on Kyocera's reputation for delivering unsurpassed quality, performance, and reliability.

Incorporating many of Kyocera's innovative advances—including a universal **KX Driver** for printing, as well as seamless network integration—the versatile **print, copy, scan** and **fax** features are also **simple** to use, making workgroup collaboration convenient and effortless. This ease of functionality dramatically reduces the burden on network administrators and IT staff, while increasing the ability of all users to better manage and control document flow.

With the KM-3035, KM-4035, and KM-5035, Kyocera pays close attention to your bottom line, too. Designed to economically manage the output demands of fast-paced workgroups, these **cost-effective** document solutions can mean significant savings for your organization over time, through conserved resources, reduced maintenance, and increased workflow efficiency.

So whether documents are paper-based or electronic—whether generating financial reports, educational materials, sales guides, or other high-impact communications critical to the business—Kyocera has a workhorse to handle the workload. Put higher productivity and performance in the hands of the workgroup with a **simple** solution from Kyocera.



Highlights

- Fast Output Speeds of up to 50, 40, or 30 pages per minute
- Optional Network Printing, Scanning, and Faxing
- Optional 20GB Multipurpose HDD for Document Management
- Standard 3-way, 1,200 Sheet Paper Supply and Duplex
- Advanced Finishing and Paper Handling Options
- Powerful Imaging Features and Capabilities, designed to increase productivity and streamline workflow

Network

► Maximise management capabilities from your desktop with outstanding network connectivity.

The KM-3035, KM-4035 and KM-5035 connect easily to virtually any network and once connected, they're transformed into versatile multi-function devices that give any enterprise complete control over its documents.

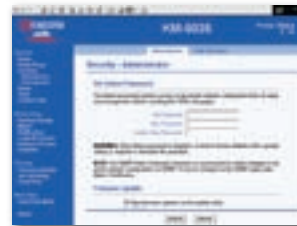
Kyocera's **Advanced Network Setup Utilities** ensure that initial setup and configuration of our document devices can be handled with unparalleled ease. Using these advanced tools, Network Administrators can set protocols, printing defaults, and preferences, enable notification services, and apply security—simply by entering an IP address in any browser interface. Minimal time is required for configuration, so Administrators are free to concentrate on other tasks. And because they're controlled through a Web interface, the KM-3035, KM-4035 and KM-5035 can be managed from any desktop.

Upon connection, **KM-NET Viewer** takes over. This Administrative Utility—provided at no charge—allows Network Administrators to monitor all SNMP compliant printing devices on the network. With KM-NET Viewer, Administrators can oversee the network configuration, check paper levels, change device defaults, and view meter counts. The ability to set auto reporting, **e-mail notifications** and alerts also allows Administrators to address any issues or problems in real-time.



ADVANCED NETWORK SETUP

The Advanced Network Setup Utility can be accessed from any Web Browser. Setup and configuration are accomplished from the desktop, providing a quick, easy way for Administrators to complete this task. The Utility allows Administrators to set multiple network protocols, device defaults, security, and advanced notification.

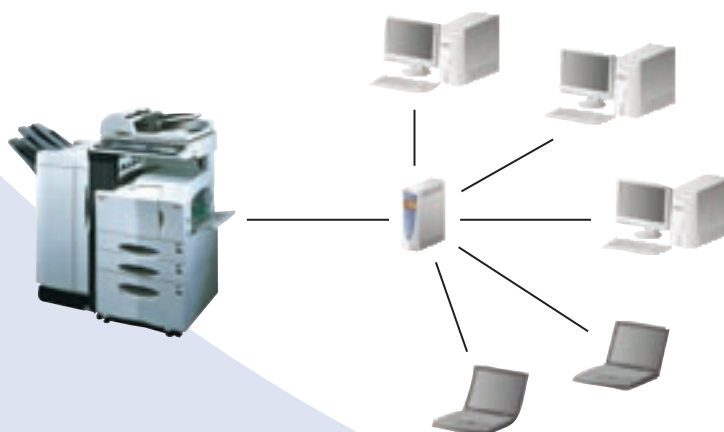


MANAGE DEVICES

KM-NET Viewer allows Administrators to monitor and maintain all Kyocera and other SNMP Compliant devices from the desktop. This Utility is easy to navigate, and provides valuable feedback, in real-time, so issues can be addressed promptly.



Once running, KM-NET Viewer can attain in-depth information from Kyocera Mita Devices. Status, meter counts, and paper levels can be viewed, and automatic reports can be generated. Error notification, via pop-up or e-mail, can also be configured.



Print

► One easy-to-use, universal print driver empowers greater productivity in every user.

At Kyocera, the driving force behind product design is maximum efficiency, **simplicity**, and productivity for both Administrator and end-users. Our sophisticated KX Driver is one result. A major advance in ensuring device consistency, compatibility, and integration, the **KX Driver** is **common to all** Kyocera products regardless of connected device, Page Description Language, or Windows™ operating system.

The KX Driver gives you full access to and control over all paper resources, publishing features and advanced finishing capabilities. With the KX Driver users can **create** outstanding documents—complete with Covers and Inserts, and finished with staples or hole-punch—saving users time and reducing costly outsourcing expenses.

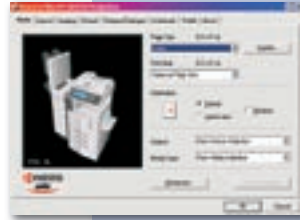
PRESCRIBE Forms Printing, Kyocera's native command language, gives users the ability to master complex printing challenges on the KM-3035, KM-4035 or KM-5035. Whether the company is interested in reducing the expense of pre-printed forms, or migrating from older line-printers, PRESCRIBE can solve unique applications for specific business needs.

For added versatility, our **PDF Direct Print Utility** significantly enhances the ability to generate impressive documents. Designed to print Portable Document Format (PDF) files outside the application, PDF Direct Print takes advantage of all key product features, such as paper handling, finishing, duplex, and even Job Storage. For the workgroup that demands productivity, PDF Direct Print delivers.



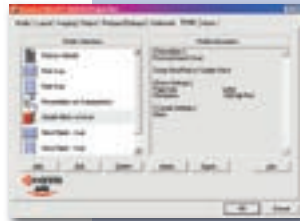
MULTI-PLATFORM SUPPORT

Whether the enterprise prints from Windows, Mac, Linux or UNIX, the KM-3035, KM-4035, or KM-5035 can do the job. Postscript (KPLD3) is included with the Print Option, so users can utilise our Desktop Print Utility from Mac, or print to Linux or UNIX from CUPS or PDQ.



ONE UNIVERSAL PRINT DRIVER

Kyocera's unique KX Driver is designed with a common user interface—regardless of device, Windows OS, or PDL. Users have total control over every feature of the KM-3035, KM-4035, or KM-5035, including paper, publishing, finishing, and document storage.



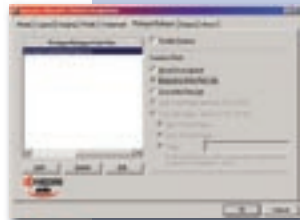
PROFILES

Workgroup clients can save Print Job settings for frequently required finishing and paper handling features. Documents can be printed productively, without a need to worry about output.



KX DRIVER SETTINGS

From properties, Administrators and end-users can choose from many options. Whether users prefer to print using PCL or Postscript language, or the enterprise requires Account Management for tracking, the universal KX Driver has the capabilities.



PRESCRIBE FORMS PRINTING

Print directly on forms and letterhead stored on the device, eliminating the need for costly pre-printed materials. Print commands are contained in the Prologue/Epilogue tab on the KX Driver for easy access.



PRINT ON DEMAND

With the optional eMPS Printer HDD, the KX Driver has the expanded capability to print and store documents with barcodes, create Virtual Mailboxes, and ensure secure printing. Truly versatile, the e-MPS HDD is an essential tool for workgroups.

Scan / Fax

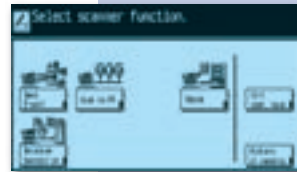
- ▶ **Unprecedented document sharing and delivery capabilities mean improved communications across your enterprise.**

Kyocera's advanced **Scanning Suite** offers the most comprehensive solution available, allowing you to deliver, share, and retrieve paper based documents easily in electronic formats. Documents can be scanned as either PDF or TIFF, up to 600 dpi, single- or double-sided. For integration with desktop applications, our Scanning System is also TWAIN-compliant.

For enhanced document management within the enterprise, we offer the **KM Document Flow System**. Access network folders and subfolders from the Touch Screen, and efficiently archive paper-based documents at a network destination. Once the destination is selected, users can index files on many levels, including File Name, Subject, Keywords, and Creator Name. Search and retrieval can also be accomplished from the desktop.

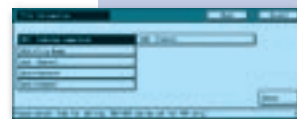
Scan-to-E-mail allows documents to be sent directly from the device, either manually from the Touch Screen Interface or the integrated Address Books. For more demanding enterprises, Kyocera's **LDAP Converter** (Lightweight Directory Access Protocol) allows users to search a Corporate E-mail Database of over 65,000 addresses. **Scan-to-File** enables users to send documents directly to their PC or MAC as **PDF** or **TIFF**, and into various applications for Optical Character Recognition (OCR) or editing.

Convenient, cost effective and **intelligent, Network Fax** supplements the workgroup's stand-alone facsimile capabilities with Super G3/33.6 kbps high-speed delivery of documents. Send/receive faxes at the user's desktop, direct incoming faxes to specific PC folders, store frequently used destinations, attach cover sheets, add messages, and more.



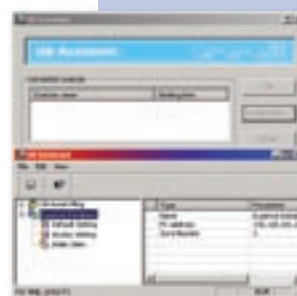
SCAN VERSATILITY

Kyocera's Scanning solution includes diverse functionality to satisfy any enterprise. Whether the business applications require Document Management, Scan-to-File, Scan-to-E-mail, or TWAIN scanning, our Scanning System can deliver.



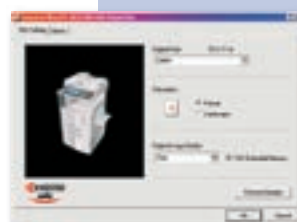
ONE TOUCH SIMPLICITY

Kyocera's Scanning System is accessed directly from the wide Touch Screen Interface for document delivery. Once the proper destination is chosen, scanned documents can be delivered intact. Documents can be scanned from the platen (glass) or Document Processor, in single- or double-sided, as TIFF or PDF, at resolutions up to 600 dpi.



SCANNED IMAGE MANAGEMENT

The DB Assistant Utility, part of KM Document Flow, offers the ability to scan directly to folders and subfolders on the network from the Touch Screen Interface. Documents can be **indexed** using Keywords, File Name, Subject, or Creator Name. These new electronic documents can be searched using software supplied with the Scanning System.



FAX / NETWORK FAX

The addition of fax opens up exciting possibilities for the Workgroup. Now, deliver faxes to any location from the control panel or the desktop. Faxes received can be printed or sent to folders on the network. Combined with the Print/Scan System, our Network Fax offers serious business solutions.

Copy

► Manage the workgroup's output demands with the highest level of functionality and versatility.

At the heart of any powerful imaging solution is reliable copy functionality, and Kyocera's reputation for delivering superior copier systems is simply unsurpassed in the industry. The KM-3035, KM-4035 and KM-5035 incorporate the best of Kyocera's copier technology, providing exceptional productivity, reliability, and image quality.

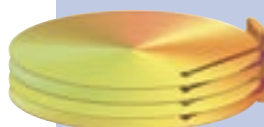
Built with the workgroup in mind, these document solutions have the power, productivity and performance to cater for the busiest of work environments. Come standard with duplex and a 3-way 1,200-sheet paper supply, there's an optional 100-sheet Document Feeder, and a choice of 1,000 or 3,000 sheet paper decks delivering a total capacity of up to 4,200 sheets.

For an even higher level of document management, Kyocera offer an optional 20GB Hard Disk Drive. This allows workgroups to take advantage of features like **Synergy Print Box**, enhancing a user's ability to **share documents** and collaborate on projects by combining individually stored files to create new documents. The Shared Data Box can be used to store any document that is routinely needed in an office, like expense forms or fax cover sheets. And the Forms Gallery allows static forms to be stored and named, ready for output any time, using the Forms Overlay feature. Users can professionally finish documents, too, with a wide range of options to meet your workgroup's finishing needs, including Edge or Book Staple, multiple Hole-Punch, and more.

All three devices employ Kyocera's exclusive, long-life Amorphous Silicon Drum technology—combined with our high yield toner capacity, this assures dramatically more images and fewer interruptions.

SIMPLE TOUCH SCREEN INTERFACE

The KM-3035, KM-4035 and KM-5035's intelligently designed control panel offers a wide Touch Screen Interface for error-free feature selections and ease-of-use. The Touch Keys, Text Messages, Graphics, and Shortcut Keys—in combination with a User Choice Screen—assure that frequently used features can be deployed instantly.



MULTI-PURPOSE HARD DRIVE

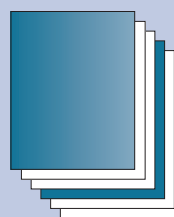
With the optional, multipurpose 20GB Hard Disk Drive, users can archive up to 70,000 pages and store critical information like frequently used forms, manuals or corporate directories for instant reprinting.



FINISH THE DOCUMENT

The optional finishing enhancements add a complete, professional look to documents. Pages can be finished with Edge or Book Staples, while Two and Four Hole-Punch are available for binder presentations.

[Hole-Punch & Edge Staple](#)



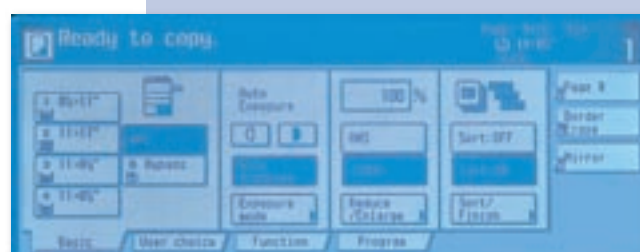
Covers and Inserts can be added, giving extra impact to your documents. Create superior output, all from the Touch Screen Interface.

[Covers / Inserts](#)



Produce A4 and A3 signature style booklets with auto V-fold and saddle stitch. These advanced finishing features make outstanding Desktop Publishing simple.

[Saddle-Stitch](#)



Solutions

- ▶ Superior performance when the pressure's on—because in today's business environment, the pressure is always on.

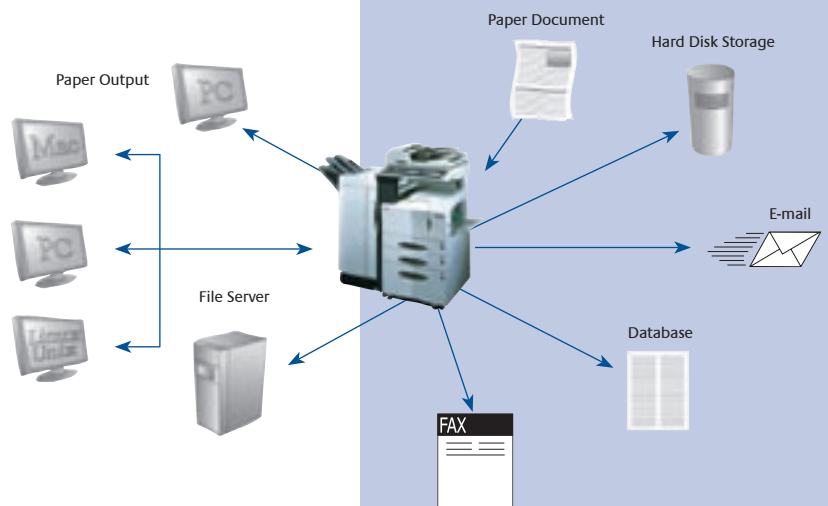
With so much to do every day, organisations need more to do it with—and Kyocera has the feature-rich, cost-effective document devices to get the job done. Whether selecting the KM-3035, KM-4035, or KM-5035, the organisation will be employing a workgroup solution that delivers unprecedented document and device management capabilities.

With more standard features than ever before—plus all the critical capabilities today's workgroup demands—these three multi-function solutions surpass all devices in their class. Any one of them is a smart choice when selecting a people-friendly, comprehensive solution that gives the level of enterprise control, flexibility, and dependability needed to stay competitive.

Advanced Kyocera features such as the KX Driver, PRESCRIBE, KM Document Flow and KM-Net Viewer ensure comprehensive job tracking and document control capabilities for Network Administrators while supplying end-users with powerful tools to solve any unique application. From simple documents to forms output to complex printing applications, the organisation will be able to keep more jobs in-house, reducing outside imaging expenses, and shortening the turnaround time on critical jobs.

Kyocera's partners also offer products that integrate with the KM-3035, KM-4035 and KM-5035 for specific business applications and requirements.

For a talented, multi-tasking workgroup that never quits, Kyocera has an affordable, multi-function workhorse that shares the same work ethic. The KM-3035, KM-4035, and KM-5035 Document Imaging Solutions from Kyocera. Productive, versatile, reliable—and ready to get to work.



Printing Solutions

- Electronic Forms Printing and Management
- Distributed Printing
- Secure Printing
- Broadcast Printing
- AS/400 Printing
- Citrix MetaFrame Printing
- Linux & Unix Printing
- SAP Printing
- IPDS/AFP Solution
- PDF Direct Printing

Scanning and Document Delivery

- Document Management
- Document Distribution
- Document Capture, Index, and OCR
- Search and Retrieval
- Enterprise Document Management
- Network Faxing

Network and Device Management

- Network Management (KM-NET Viewer)
- E-mail Notifications
- Print Cost Accounting
- Automatic Meter Reporting

KM-3035/4035/5035 Specifications

Basic Specifications:

Configuration:	Desktop Digital Copier with Standard 500 x 2 Paper Drawers Plus 200 Sheet Multi-Purpose Tray, Standard Duplex, Optional Network Printing, Scanning and Network Fax
Resolution:	600 x 600 DPI Resolution / 256 Levels, Fast 1200 DPI Print Resolution
Copier Memory:	Standard 64MB RAM; Optional 20GB HDD
Magnification:	Full Size, 5 Reduction, 5 Enlargement Preset Ratios, Plus 25-400% Zoom
Electrical Requirements:	240V, 50/60Hz, 10A
Dimensions/Weight:	585mmW x 646mmD x 745mmH / 82kg output speeds:
Warm-Up Time:	Within 25 Seconds, Program During Warmup, Auto Start
First Copy Out:	3.5 Seconds (5035/4035), 3.9 Seconds (3035)
Pages Per Minute:	KM-5035 - 50 A4, 26 A3 KM-4035 - 40 A4, 23 A3 KM-3035 - 30 A4, 20 A3

Paper Supply:

Standard Paper Sources:	Dual 500 Sheet Drawers, 200 Sheet MPT, Auto Selection / Switching, Add Paper While Running
Drawer Paper Size:	A5R - A3
MPT Paper Size :	A6R - A3
Std. / Max. Paper Capacity:	1,200 / 4,200
Paper Weight:	60-105 g/m2 via Paper Drawers, 45 - 200 g/m2 via MPT
Input Materials:	Bond Paper, Recycled Paper, Transparencies, Labels

Duplex Unit:

Paper Size:	A5R - A3
Paper Weight:	64 - 80 g/m2
Duplex Modes:	Standard 1:2, 2:2, Book: 2, 2:1
Imaging Modes:	Text, Photo, Text / Photo, Auto, Manual, ECO
Continuous Copy:	Up to 999, Auto Reset to 1
Additional Features:	Auto Magnification and Paper Select, Job Build, Job Queue, Batch Copy, Booklet Mode, Book Mode, Combine Image, Covers, Erase Mode, Image Overlay, Image Rotate, Image Reverse, Interrupt, 8 Job Programs, Margin Shift, Mirror Image, Page Numbering, Transparency Mode, Memo Mode, 100 / 1000* Management Codes, XY Zoom, Auto Centreing *Optional Document Management: Store Documents, File Merge, Forms Composition, Repeat Copy

Paper Handling Options:

DOCUMENT PROCESSOR: SRDF-2	
Type:	Reversing Automatic Document Processor
Acceptable Originals:	A5R - A3, Mixed Size
Capacity:	100 Sheet RADF / 50 A4 Size Originals Per Minute
Paper Weight:	Single-sided 35 - 60 g/m2, Double-sided 50 - 120 g/m2
Dimensions / Weight:	553mmW x 478mmD x 137mmH / 10.5kg

FINISHER: DF-71

Stack Capacity/Paper Size:	Main Tray: 3,000 Sheets (A4) / 1,500 Sheets (A3); Sub Tray: 200 Sheets
Paper Weight:	60 - 160 g/m2
Staple Capacity:	50 Sheets: A4, B5; 30 Sheets: A3, B4
Edge Staple Position:	3 Positions: Top Left, Bottom Left, Left / Top Side
Punch:	Standard 2 and 3 Hole
Dimensions / Weight:	688mmW x 598mmD x 1050mmH / 50kg

SIMPLE FINISHER: DF-73

Stack Capacity:	Main Tray: 1,000 Sheets (A4) / 500 sheets A3
Paper Size:	Main: A4 - A3
Paper Weight:	64 - 128 g/m2
Staple Capacity:	30 Sheets: A4; 20 Sheets: A3
Edge Staple Position:	1 Position: Top Left
Dimensions / Weight:	558mmW x 526mmD x 916mmH / 25kg

SADDLE STITCH FINISHER: DF-75

Stack Capacity:	Main Tray: 1,000 Sheets
Paper Size:	Main: A5R - A3
Paper Weight:	60 - 200 g/m2
Staple Capacity:	50 Sheets: A4; 25 Sheets: A3
Edge Staple Position:	4 Positions: Top Left, Bottom Left, Left Side, Centre
Saddle Stitch:	Max A3; Up to 10 Sheets
Punch:	Optional 2 and 4 Hole
Dimensions / Weight:	718mmW x 603mmD x 1000mmH / 39kg

INTERNAL FINISHER: DF-78

Stack Capacity:	500 Sheets
Paper Size:	A4 - A3
Paper Weight:	60 - 80 g/m2
Staple Capacity:	30 Sheets: A4; 20 Sheets: A3
Edge Staple Position:	1 Position
Weight:	9kg

MULTI-BIN MAILBOX: M-2107

Number of Trays:	7
Tray Capacity:	100 Sheets: A4; 50 Sheets: A3/B4
Paper Weight:	64 - 80 g/m2
Dimensions / Weight:	510mmW x 400mmD x 470mmH / 10kg

PUNCH UNIT: PH-2

Paper Size:	B5 - A3
Paper Weight:	64 - 200 g/m2
Number of Holes:	2 and 4
Weight:	2.5kg

LARGE CAPACITY TRAY: PF-75

Paper Capacity:	3,000 Sheets
Paper Weight:	60 - 105 g/m2
Paper Size:	A5R - A3
Dimensions / Weight:	585mmW x 600mmD x 314mmH / 23kg

dual paper drawers: PF-70

Paper Capacity:	2 x 500 Sheets
Paper Weight:	60 - 105 g/m2
Paper Size:	A5R - A3
Dimensions / Weight:	585mmW x 600mmD x 314mmH / 26kg

Connectivity Options:

PRINT / SCAN: PRINT / SCAN SYSTEM (U)

PRINT:

Controller:	Embedded PowerPC750 / 500 MHz Controller
Printer Memory:	Standard 64MB, Upgradeable to 576MB via 100 Pin DIMMS, Optional Printer HDD, Standard CF Card Slot (Type 1)
Supported PDL / Emulations:	PRESCRIBE, PCL6 (PCL XL, PCL 5e), KPDL3 (PS3), KCGL (HP-GL/2), Diablo 630, IBM ProPrinter X24, Epson LQ850, Line Printer
Fonts:	80 Outline Fonts for PCL XL/5e, 136 Outline Fonts for KPDL3, 1 Bitmap Font
Windows™ OS Compatibility:	Windows™ 95/98/Me/NT4.x/2000/XP
Novell™ OS Compatibility:	Novell NetWare™ 3.x/4.x/5.x
Mac OS Compatibility:	OS 8.x/9.x/10.x
UNIX OS Compatibility:	Sun OS 4.1.x; Solaris 2.x; AIX, HP-UX (LPR)
Connectivity / Interface:	Standard 10/100BaseTX, Parallel IEEE1284, High Speed USB 2.0

KUIO LV Expansion Slots (2):

Supported Protocols:	Optional Printer Hard Disk Drive IB-21e 10/100Base TX; IB-11 Serial Interface
Driver:	TCPIP, IPX/SPX, AppleTalk, NetBEUI
Utilities:	KX Driver for Windows™, PPD for Mac, PPD for Linux/UNIX KM-NET Viewer, KM-NET Remote Operation Panel, PDF Direct Print, KM-NET Job Manager, KM-NET Printer Disk Manager, Network Advanced Setup Utilities, PRESCRIBE Utilities

SCAN:

Resolution:	200, 300, 400, 600 DPI
Scan Speed:	50 Originals Per Minute (All Models)
File Formats:	PDF, TIFF
Connectivity:	Standard NS-30 10/100BaseTX
Supported Protocols:	TCPIP
Scanning Features:	KM Document Flow System - Document Management System, Scan to PC/File, Scan to Mac, Scan to E-mail, TWAIN
Driver:	TWAIN Driver
Utilities:	KM DB-Assistant, KM Scanner File Utility, Scan to Mac Utility, KM Scanner Address Book, Address Book Editor, LDAP Converter Utility, Network Advanced Setup Utilities

PRINTER HARD DISK DRIVE:

Enables Document Printing and e-MPS Functions; Private Print, Job Storage, Quick Copy, Proof & Hold, Virtual MailBoxes

FAX / NETWORK FAX: FAX SYSTEM (I)

Compatibility:	Super G3
Transmission Speed:	Approximately 3 Seconds Per Page
Modem Speed:	33.6 Kbps with Auto Fallback
Data Compression:	JBIG, MMR, MR, MH
Fax Memory:	Std 8MB / Max 16MB
Driver:	KM Network Fax Driver
Utilities:	Address Book for NW Fax
Additional Features:	Duplex TX/RX, Confidential RX/TX, Polling, Broadcasting, 2 in 1 RX

COPIER HARD DISK DRIVE: HD-70

Enables Advanced Copier Document Management; Synergy Box, Shared Data, Forms Gallery; Store up to 70,000 Pages, Repeat Copy, 1,000 Management Codes

ADDITIONAL OPTIONS:

Copier HDD (HD-70), Job Separator (J-1402), 8MB Fax Memory Board (FM1-8MB), Stand

Australia Sales Enquiries
1300 364 429

Australia Web Address
www.kyoceramita.com.au

New Zealand Web Address
www.kyoceramita.co.nz

Sydney Head Office

6-10 Talavera Road
North Ryde NSW 2113
Phone: (02) 9888 9999
Fax: (02) 9888 9588

Melbourne Office

Unit 2, 993 North Road
Murrumbeena VIC 3163
Phone: (03) 9579 1555
Fax: (03) 9579 1544

Brisbane Office

Cnr Forbes St & Riverside Drive
West End QLD 4101
Phone: (07) 3844 6686
Fax: (07) 3844 8569

Perth Office

104 Walters Drive
Osborne Park WA 6017
Phone: (08) 9201 9155
Fax: (08) 9201 9511

Adelaide Office

53 Rundle Street,
Kent Town SA 5067

Canberra Office

Epicorp Centre
401 Clunies Ross Street
Acton ACT 2601
Phone: (02) 6229 1729
Fax: (02) 6229 1701

New Zealand Office

1-3 Parkhead Place
Albany New Zealand
Phone: (64) 9 415 4517
Fax: (64) 9 415 4597

ABN 77 003 852 444

Kyocera is the
Official Supporter of
Business Clean Up Day

A SMART
ENVIRONMENTAL
CHOICE

Protection of the environment
is integral to Kyocera's
day-to-day operations. Research
over the last few decades has
been focused, not only
developing the most advanced
document management devices,
but also doing so in harmony
with the environment.



Disclaimer

Kyocera does not warrant that any specifications mentioned will be error-free. Specifications are subject to change without notice. Information is correct at time of going to print. All other brand and product names may be registered trademarks or trademarks of their respective holders and are hereby acknowledged.